

Kaycee for Commitment...
Kaycee for Quality...



KAYCEE
Brand that set the standards

LIMIT SWITCHES



CE Approved

DESCRIPTION :

Kaycee Limit Switches type KLS have been specially designed to convert a mechanical motion into an electrical control signal. The mechanical motion is usually in the form of a cam, a machine component or an object moving towards a predetermined position. The cam engages the limit switch roller lever or plunger and in turn makes or breaks an electrical contact inside the switch. This electrical control signal is then used to limit, position or reverse motion travel or to initiate another operating sequence. It can also be used for counting, sorting or as a safety device. Typical applications of the Kaycee Limit Switch are in the control circuit of solenoids control relays and motor starters (switch control the motion of the machine tools), presses, conveyors, hoists, elevators and practically every type of motor drive machines.

RATING : 10A/500VAC

SPECIFICATION : Conform to IS / IEC 60947 Part I & III and V

ELECTRICAL DATA

Operational Rating : 0.5A/250VDC FOR OB & 1A/250VDC FOR OA (10A/250VAC for OB Switch) (10A/500VAC FOR OA Switch)

Continues Current : 10A

Mechanical Life : 50,000 Operations

Electrical Life : 25,000 Operations


Ambient Temperature : 40 ° C to 85 ° C

MECHANICAL DATA

Applications : Kaycee Limit Switches are available in two basic types. They are normally used where actuation is relatively fast or for snap action where action is relatively slow. The basic limit switches are also available in standard die cast aluminium housing with or without oil tight enclosure and with three types of actuators, namely push rod, normal roller lever and angular roller lever.

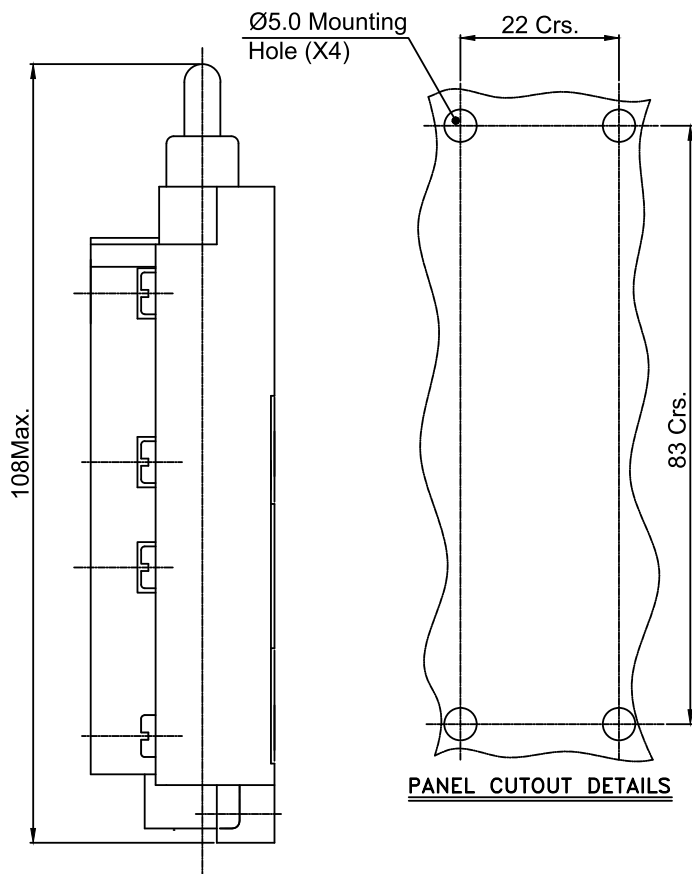
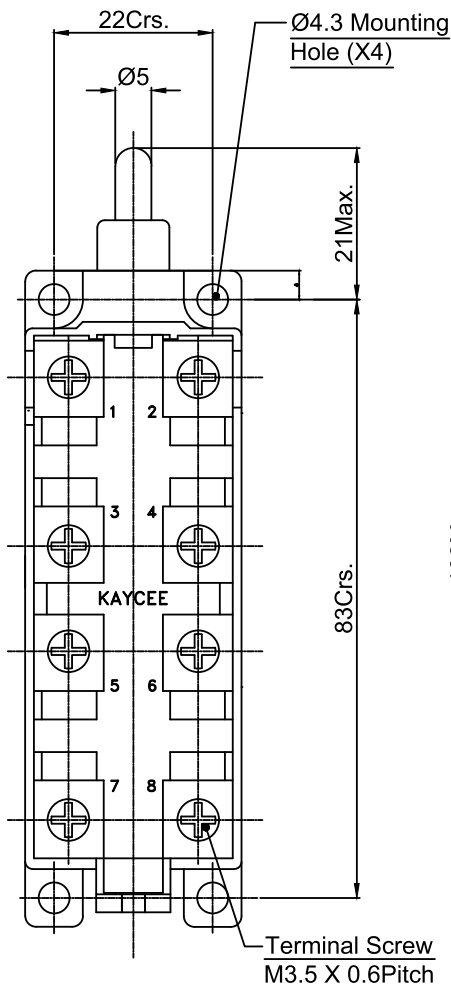
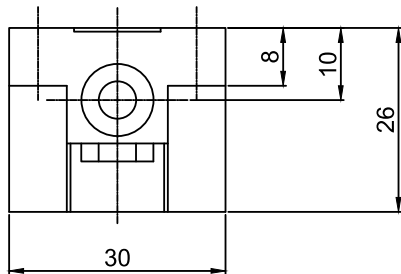
Circuitry : Type KLS is available having 1 NO and 1 NC contact arrangement.

Specification : Switches conform to AC II duty as per IS / IEC 60947 (part III & V)

Execution	Image	Design	Code	Contacts		Enclosure according to IS : 2147/1962
				Arrangement	No. of Contacts	
Open		With push rod	KLS 000X-OA KLS 000X-OB	Normal Snap Action	1 NO + 1 NC	IP- 00
		With push rod & Plastic FP Protective Cover	KLS 001X-OA KLS 001X-OB	Normal Snap Action	1 NO + 1 NC	IP- 40
In standard die cast aluminium housing		With push rod	KLS 002X-OA KLS 002X-OB	Normal Snap Action Overlapping	1 NO + 1 NC	IP- 43
		With normal roller lever	KLS 003X-OA KLS 003X-OB	Normal Snap Action	1 NO + 1 NC	IP- 43
		With angular roller lever	KLS 004X-OA KLS 004X-OB	Normal Snap Action	1 NO + 1 NC	IP- 43
In oil-tight die-cast aluminium housing		With push rod	KLS 005X-OA KLS 005X-OB	Normal Snap Action	1 NO + 1 NC	IP- 65
		With normal roller lever	KLS 006X-OA KLS 006X-OB	Normal Snap Action	1 NO + 1 NC	IP- 65
		With angular roller lever	KLS 007X-OA KLS 007X-OB	Normal Snap Action	1 NO + 1 NC	IP- 65
Open		With push rod & plastic FP protective cover	KLS 023X - OA KLS 203X - OA KLS 123X - OA KLS 213X - OA KLS 224X - OA	Normal	2 NC 2 NO 1 NO + 2 NC 2 NO + 1 NC 2 NO + 2 NC	IP 40

TECHNICAL DATA

Ambient Temp	40°C to 85°C
Degree of Protection	Open Type
	Cast - metal clad
	Electrical Connector
	For Limit Switches
Conductor Sizes (M-3.5 2x1.5 mm ² finely stranded with end sleeves 2x2.5 mm ² solid (do not use cable lugs)	
Cable Entry for Cast - metal Housing	M20 I.S Conduit pipe
Protective Earth.	
Conductor Connection	M-3.5 Tapped hole M-3.5 terminal screw
Inside Housing Outside Housing	
Housing	Cast Aluminium
Mounting Position	Any



PANEL CUTOUT DETAILS

DIMENSIONS (All in m.m.)

KLS003X

Characteristics

CODE	F.P.	O.P.	O.T.
KLS003X-OA	56	50.5	4.5
KLS003X-OB	56	51.5	5.4

KLS004X

Characteristics

CODE	F.P.	O.P.	O.T.
KLS004X-OA	53	55.5	2
KLS004X-OB	53	56	1.5

KLS002X

Characteristics

CODE	F.P.	O.P.	O.T.
KLS002X-OA	26	22	3
KLS002X-OB	26	22.5	3.5

Panel Cutout Details



Manufactured by :
KAYCEE INDUSTRIES LIMITED
 32, Ramjibhai Kamani Road, Ballard Estate,
 Mumbai - 400 001
 Tel.: 91-22-22613521 / 22 / 23 / 22616106
 Email : sales@kayceeindustries.com
 Website : www.kayceeindustries.com

